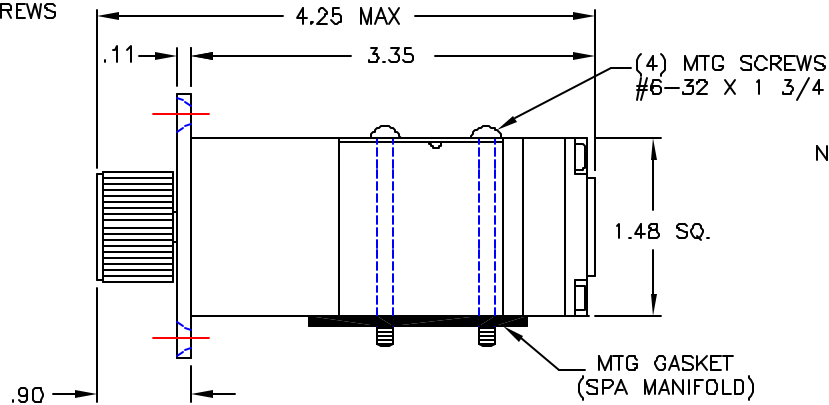
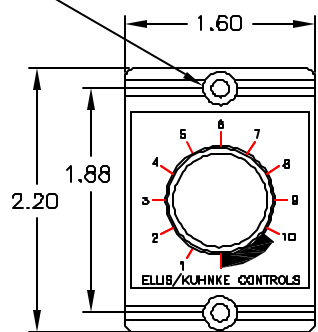
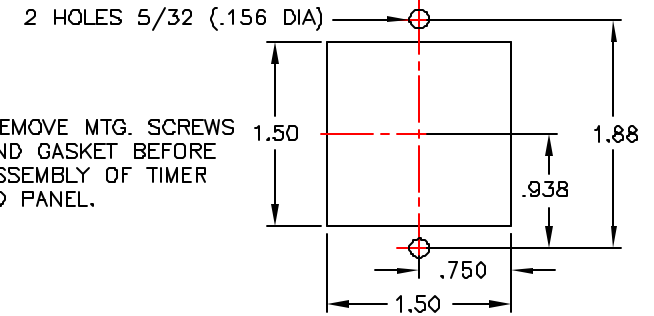


2 MTG. HOLES (.140 DIA.) FOR #6 FLAT HEAD MACHINE SCREWS

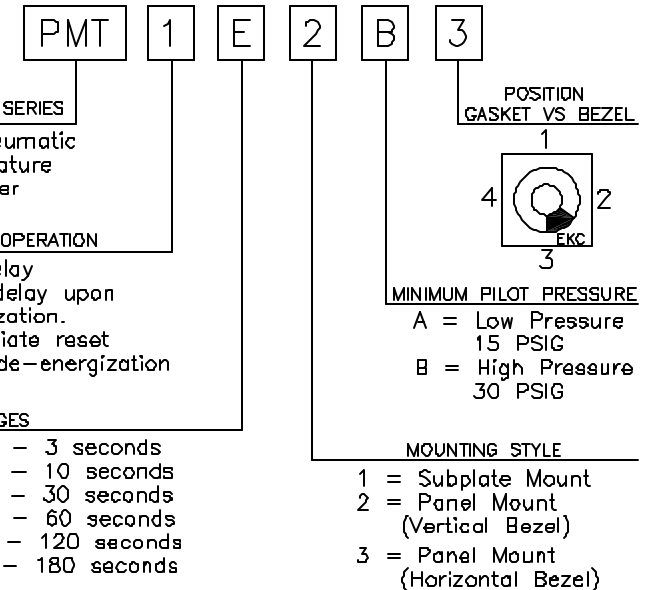


RECOMMENDED PANEL CUTOUT



NOTE: REMOVE MTG. SCREWS AND GASKET BEFORE ASSEMBLY OF TIMER TO PANEL.

HOW TO ORDER:



The PMT Series Pneumatic Timer is made to be used with most standard spool type (spring return-detented) valves of all leading brands of air logic. This timer has a logic output and is designed to operate the control pilot of the receiving valve. The timer is shipped as shown above with mounting screws and gasket. A subplate manifold (enables unit to be supplied with 10-32 or 1/8 NPT porting) is available but must be ordered separately.

TECHNICAL SPECIFICATIONS:

OPERATING PRESSURE:
15 - 100 PSI

CONNECTIONS:
10-32 or 1/8 NPTF ports via subplate (must be ordered separately)

CONTROL PRESSURE:
 (A) Low Pressure 15 to 100 PSI
 (B) High Pressure 30 to 100 PSI

MEDIA:
Filtered Air or non-aggressive gas, non-lubricated.

TIMING VALVE:
 CV - .005
 Flow at 50 PSI - .1 CFM

TIMING START:
Continuous application of pilot pressure to control port.

RESET:
Immediately resets upon removal of pilot pressure independent of whether the time interval has elapsed or not.

RESET:
60 ms at 50 PSI

REPEATABILITY:
± 3%

TIME SETTING:
Via adjustment knob.
Accuracy ± 10%

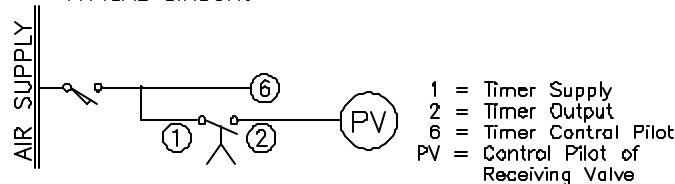
OPERATION:
On-delay Time Delay upon energization.
Application of air to control (pilot) port.

AIR CONSUMPTION:
.1 CFM at 100 PSI

MATERIALS:
Acetal and Polycarbonate enclosure, Diaphragms are Buna N.

OPERATING AMBIENT:
0°C to 56°C (32°F to 150°F)

TYPICAL CIRCUIT:



PRODUCT SERIES
PMT=Pneumatic Miniature Timer

TYPE OF OPERATION
 1=On-delay
 Time delay upon energization.
 Immediate reset upon de-energization

TIME RANGES
 D = 0.3 - 3 seconds
 E = 1.0 - 10 seconds
 F = 3.0 - 30 seconds
 G = 6.0 - 60 seconds
 H = 12 - 120 seconds
 J = 18 - 180 seconds

ELLIS/KUHNKE CONTROLS					
DRAWN BY EJJ	7/26/00	PANELMOUNT-VERTICAL BEZEL PMT SERIES TIMERS			
CHECKED		SIZE B	FSCW N1	DWG. N1	STYLE 2
ISSUED					SHEET 1 OF 2