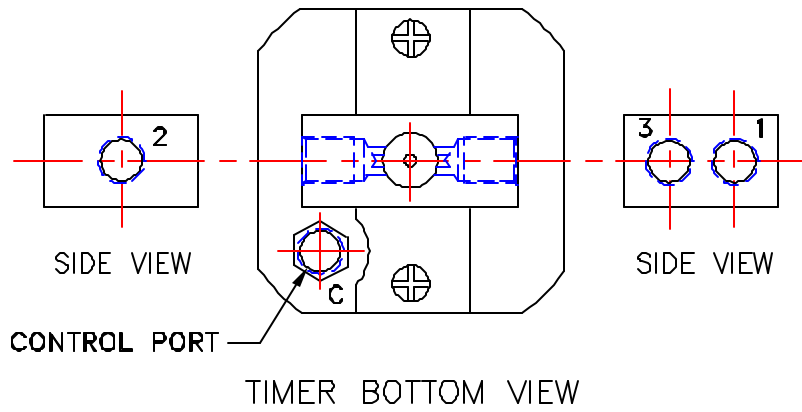


REVISIONS			
REV.	DESCRIPTION	DATE	APPROVAL
A	RELEASE NEW DRAWING	9/8/95	



VALVE CONNECTION OPTIONS:

- 3 AS INPUT – TURNS OFF OUTPUT WHEN TIMED OUT. PASSES AIR FROM PORT 3 TO 2 WHILE TIMING. DUMPS (VENTS) AIR FROM 2 TO 1 WHEN TIMED OUT.
- 2 AS INPUT – DIVERTER DURING TIMING AIR FLOWS FROM PORT 2 TO 3. AFTER TIMING OUTPUT IS SWITCHED FROM PORT 3 TO PORT 1.
- 1 AS INPUT – TURNS ON OUTPUT AFTER TIME DELAY. DUMPS (VENTS) AIR FROM PORT 2 TO PORT 3 WHILE TIMING. AIR FLOWS FROM PORT 1 TO PORT 2 AFTER TIME DELAY.

OFF DELAY:

- APPLYING PRESSURE TO THE CONTROL PORT – C – FOR AT LEAST .100 SECONDS WILL TRANSFER THE 3-WAY VALVE AND ARM THE DEVICE FOR TIMING.
- TIME DELAY BEGINS WHEN PRESSURE IS REMOVED FROM THE CONTROL PORT – C.
- RE-APPLICATION OF PRESSURE TO THE CONTROL PORT – C – (DURING OR AFTER TIMING) WILL RESET FOR A NEW TIME DELAY CYCLE.
- ALL PORTS SUPPLIED WITH 1/8 NPTF THREADS.
- MOUNT VERTICALLY (ADJUSTING DIAL TOP/VALVE BOTTOM) UNLESS OTHERWISE SPECIFIED DEVICE IS CALIBRATED FOR VERTICAL OPERATION.

QTY. REQ'D	ITEM NO.	PART OR IDENTIFICATION NO.	NOMENCLATURE OR DESCRIPTION	MATERIAL SPECIFICATION
UNLESS OTHERWISE SPECIFIED DIMENSIONS ARE IN INCHES. TOLERANCES ARE: FRACTIONS DECIMALS ANGLES ± .015 ± .005 ± 1°				
MATERIAL		①	ELLIS/KUHNKE CONTROLS	
FINISH			DRAWN BY E.J.L. 9/8/95	PNEUMATIC TIMER OFF DELAY VERTICAL MOUNT
DO NOT SCALE DRAWING			CHECKED	SIZE B FSCM NO. DWG. NO. PT41
			ISSUED	SCALE 4:1 SHEET 2 OF 2