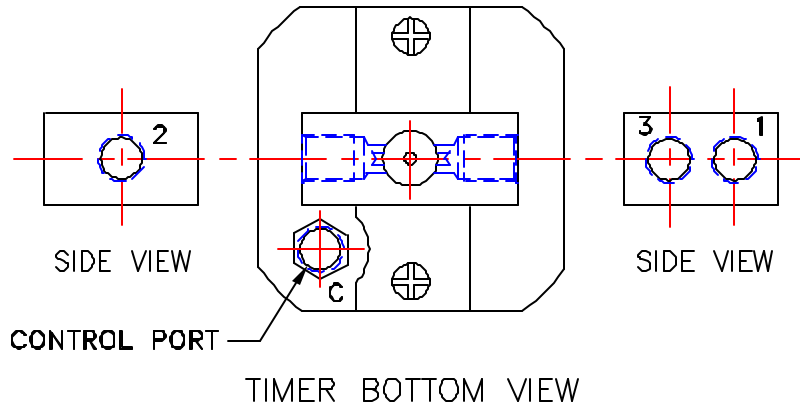


REVISIONS			
REV.	DESCRIPTION	DATE	APPROVAL
A	RELEASE NEW DRAWING	9/8/95	



VALVE CONNECTION OPTIONS:

- 3 AS INPUT – TURNS OFF OUTPUT WHEN TIMED OUT.
PASSES AIR FROM PORT 3 TO 2 WHILE TIMING.
DUMPS (VENTS) AIR FROM 2 TO 1 WHEN TIMED OUT.
- 2 AS INPUT – DIVERTER
DURING TIMING AIR FLOWS FROM PORT 2 TO 3.
AFTER TIMING OUTPUT IS SWITCHED FROM PORT 3 TO PORT 1.
- 1 AS INPUT – TURNS ON OUTPUT AFTER TIME DELAY.
DUMPS (VENTS) AIR FROM PORT 2 TO PORT 3 WHILE TIMING.
AIR FLOWS FROM PORT 1 TO PORT 2 AFTER TIME DELAY.

ON DELAY:

- TIME DELAY WHEN CONTINUOUS PRESSURE IS APPLIED TO THE CONTROL PORT – C.
- INTERRUPTING CONTINUOUS PRESSURE TO CONTROL PORT – C – (DURING OR AFTER TIMING) WILL RESET FOR NEW TIME DELAY CYCLE.
- ALL PORTS SUPPLIED WITH 1/8 NPTF THREADS.
- MOUNT VERTICALLY (ADJUSTING DIAL TOP/VALVE BOTTOM) UNLESS OTHERWISE SPECIFIED DEVICE IS CALIBRATED FOR VERTICAL OPERATION.

QTY. REQ'D	ITEM NO.	PART OR IDENTIFICATION NO.	NONCULATURE OR DESCRIPTION	MATERIAL SPECIFICATION
UNLESS OTHERWISE SPECIFIED DIMENSIONS ARE IN INCHES. TOLERANCES ARE: FRACTIONS DECIMALS ANGLES ± .015 ± .005 ± 1° XXX° .005 .005				
MATERIAL		DRAWN BY	ELLIS/KUHNKE CONTROLS	
		9/8/95	PNEUMATIC TIMER ON DELAY VERTICAL MOUNT	
NEXT ASSY		USED ON	SIZE B	FSCM NO.
APPLICATION		DO NOT SCALE DRAWING	DWG. NO.	PT31
			SCALE 4:1	SHEET 2 OF 2