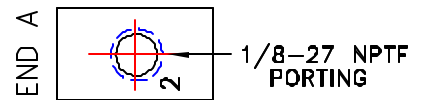
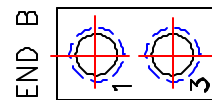
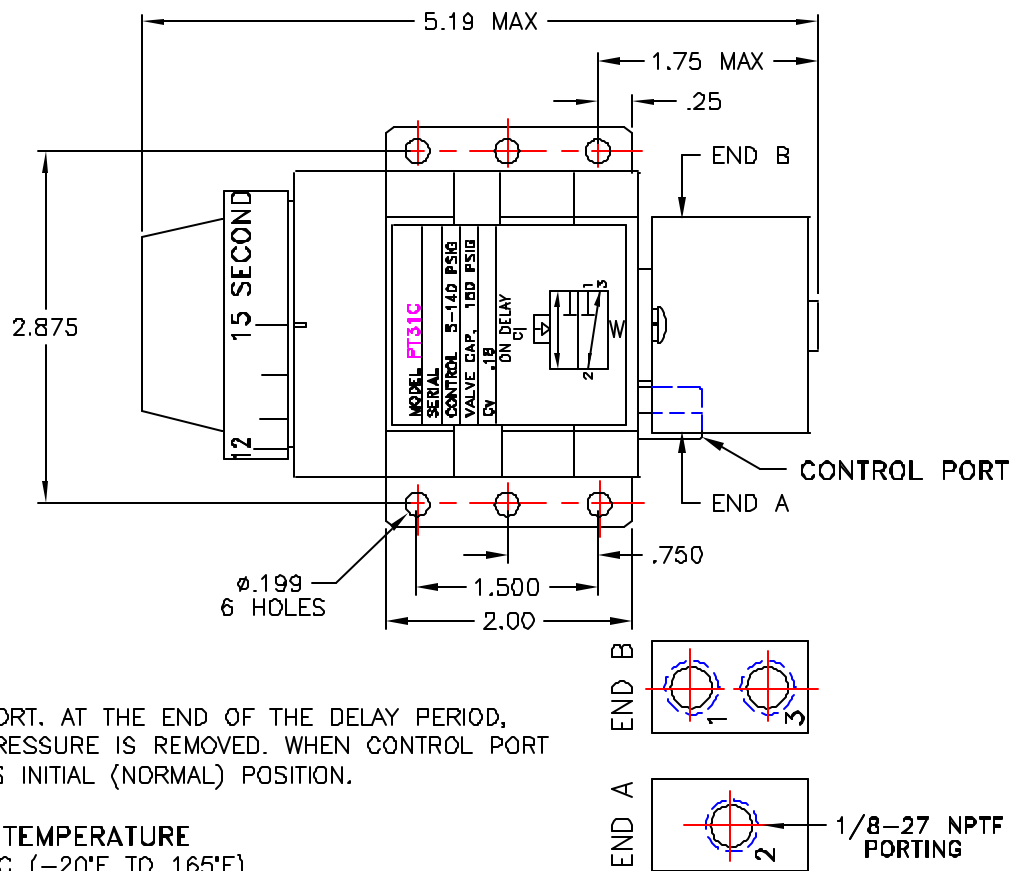
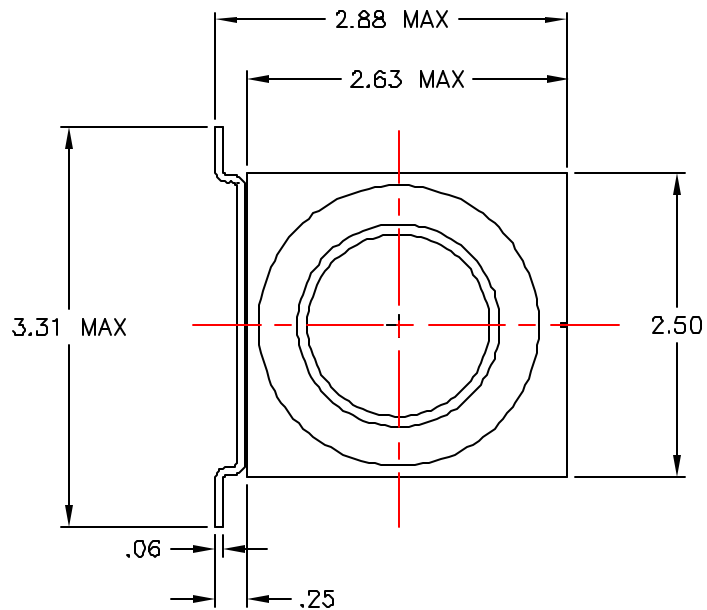


MOUNT VERTICALLY AS SHOWN



REVISIONS			
REV.	DESCRIPTION	DATE	APPROVAL
A	RELEASE NEW DRAWING	8/15/95	

OPERATION

TIMING BEGINS WHEN SPECIFIED PRESSURE IS APPLIED TO THE CONTROL PORT. AT THE END OF THE DELAY PERIOD, 3-WAY OUTPUT VALVE TRANSFERS AND REMAINS IN THIS POSITION UNTIL PRESSURE IS REMOVED. WHEN CONTROL PORT PRESSURE IS REMOVED, TIMER RESETS AND OUTPUT VALVE RETURNS TO ITS INITIAL (NORMAL) POSITION.

TIME RANGE

- 0.1 TO 1 SEC
- 0.5 TO 5 SEC
- 1.5 TO 15 SEC
- 5 TO 50 SEC
- 20 TO 200 SEC
- 1 TO 300 SEC
- 1 TO 10 MIN
- 3 TO 30 MIN
- 6 TO 60 MIN

MODEL

- PT31A
- PT31B
- PT31C
- PT31D
- PT31E
- PT31K
- PT31F
- PT31H
- PT31I

OPERATING PRESSURE

5 TO 140 PSIG

MEDIA

3-5 MICRON FILTERED AIR OR NONAGGRESSIVE GAS NON-LUBRICATED

REPEAT ACCURACY

UP TO 200 SEC ±5% OVER 200 SEC ±10%

OPERATING TEMPERATURE

-30°C TO 70°C (-20°F TO 165°F)

OUTPUT VALVE

Cv - 0.25
FLOW @ 100 PSI - 9 CFM
MULTI PURPOSE 3-WAY SPOOL
28" Hg TO 300 PSIG

ELLIS/KUHNKE CONTROLS			
DRAWN BY	EJL	PNEUMATIC TIMER ON DELAY VERTICAL MOUNT	
CHECKED	8/15/95	SIZE B	DWG. NO. PT31
ISSUED		FSCM NO.	SCALE 4:1
			SHEET 1 OF 2