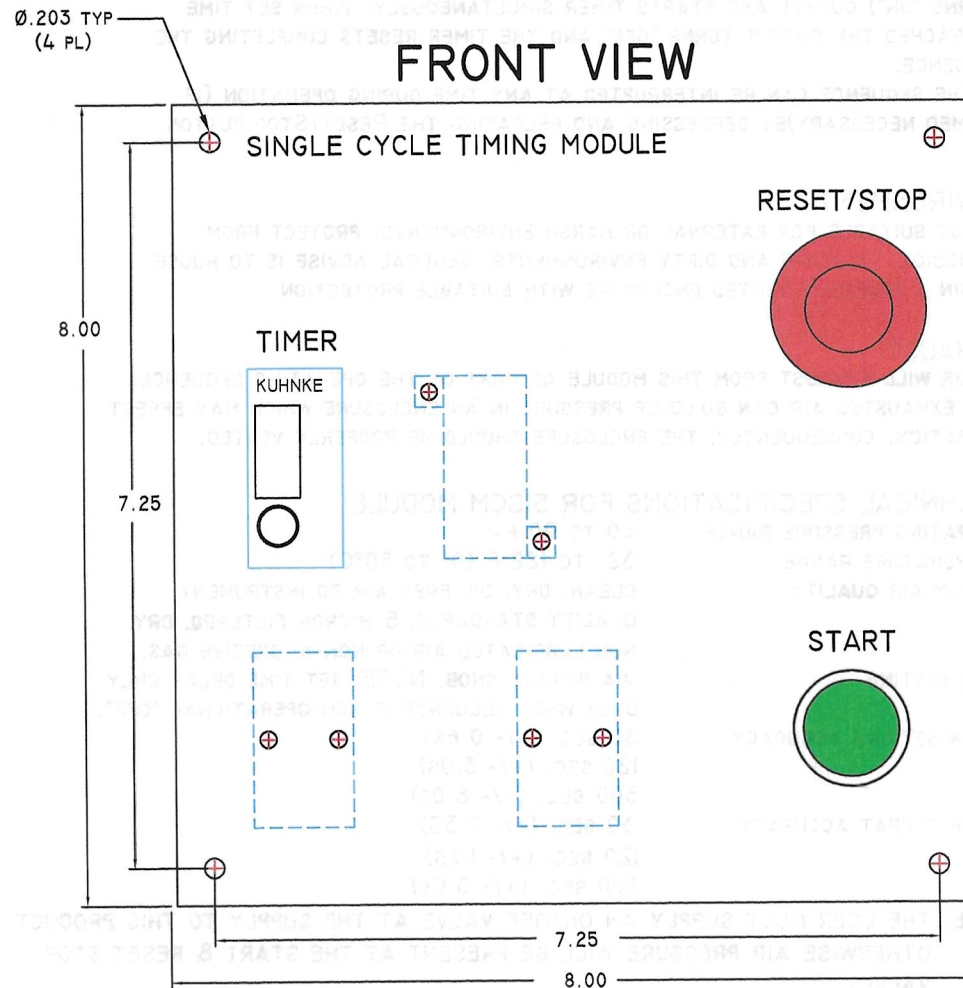


PANEL CUTOUT = 7.00 INCHES SQUARE

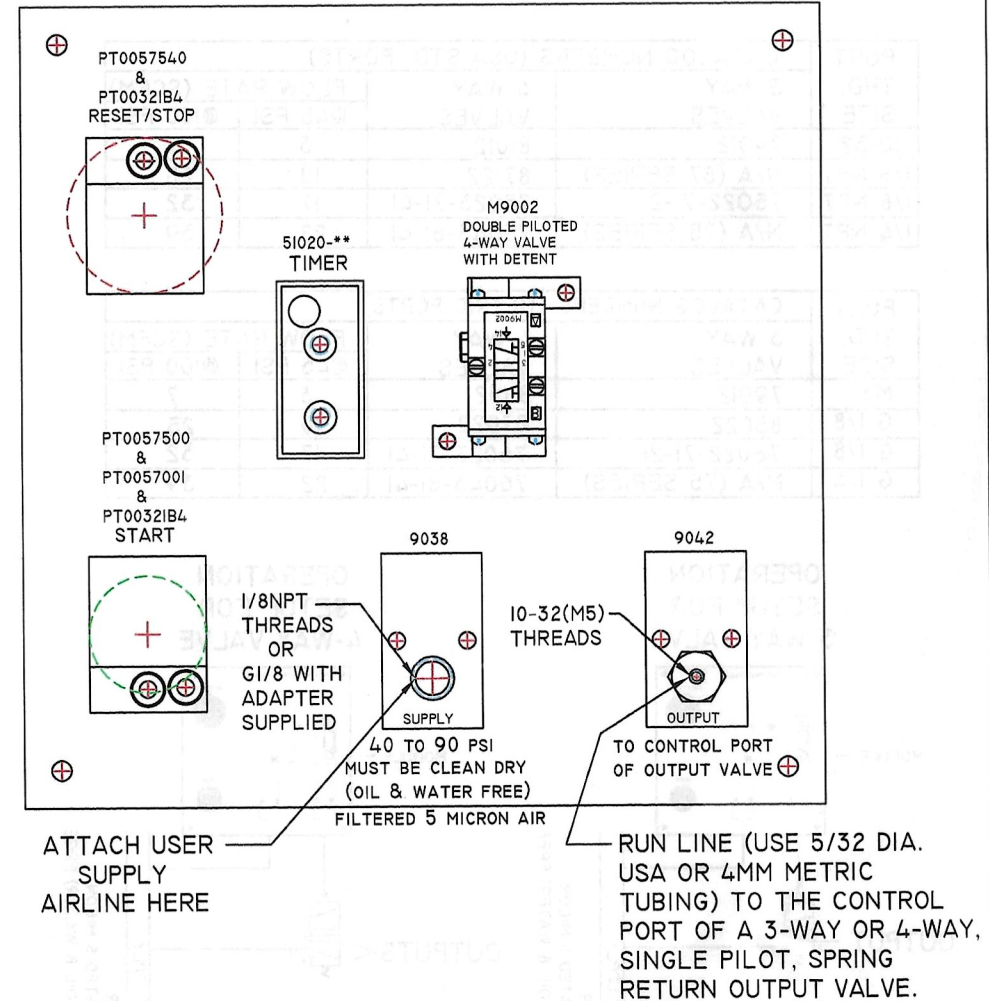
# DISCLAIMER:

ELLIS KUHNKE CONTROLS ACCEPTS NO RESPONSIBILITY FOR THE APPLICATION OF THIS PRODUCT. IT IS UP TO THE PURCHASER/SPECIFIER/END USER TO COME UP WITH AN ACCEPTABLE DESIGN.

## FRONT VIEW



## REAR VIEW



HOW TO ORDER:  
AVAILABLE IN THE FOLLOWING MODELS:

MODEL NO.	TIME RANGE
5ISCM03	(2 TO 30 SECONDS)
5ISCM34	(8 TO 120 SECONDS)
5ISCM30	(30 TO 300 SECONDS)

NOTE: THIS PRODUCT IS DESIGNED TO OPERATE ONLY THE CONTROL PORT OF A CLOSED VOLUME SPRING RETURN VALVE 3-WAY OR 4-WAY.

APPROVALS				DATE				ELLIS/KUHNKE CONTROLS			
DRAWN		EJL		7/11/23				OPERATING INSTRUCTIONS FOR 5ISCM SINGLE CYCLE TIMING MODULE			
CHECKED								SIZE C		FSCM NO.	
ISSUED										DWG. NO.	
										SIMINI SINGLE CYCLE INSTRUCTIONS	
										SHEET 1 OF 2	

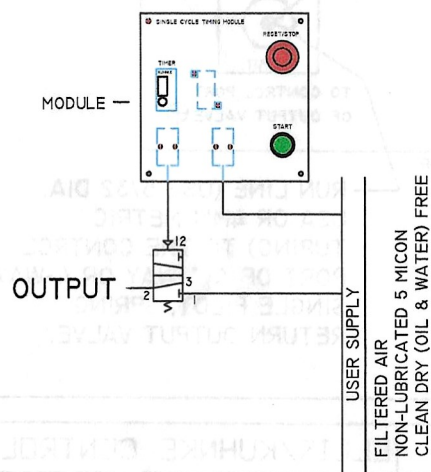
## 5ISCM PNEUMATIC SINGLE CYCLE TIMING MODULE

THE 5ISCM IS DESIGNED TO OPERATE THE CONTROL (VIA THE CONTROL PORT) OF 3-WAY & 4-WAY, SINGLE PILOT, SPRING RETURN OUTPUT VALVES. THE FOLLOWING KUHNKE VALVES ARE COMPATIBLE WITH THIS MODULE:

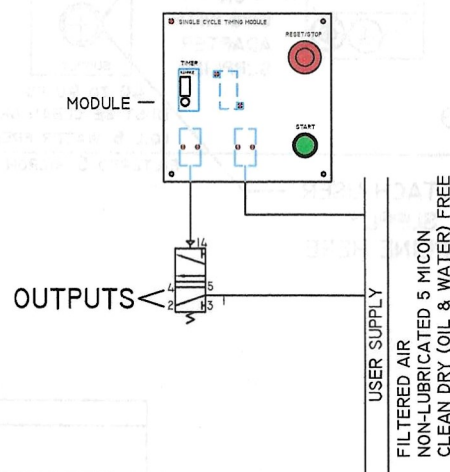
PORT THD. SIZE	CATALOG NUMBERS (USA STD. PORTS)			
	3-WAY VALVES	4-WAY VALVES	FLOW RATE (SCFM)	
			@45 PSI	@100 PSI
10-32	79012	81012	3	7
1/8 NPT	N/A (87 SERIES)	87122	10	25
1/8 NPT	75022-71-21	75023-71-41	17	32
1/4 NPT	N/A (75 SERIES)	75043-81-41	22	39

PORT THD. SIZE	CATALOG NUMBERS (METRIC PORTS)			
	3-WAY VALVES	4-WAY VALVES	FLOW RATE (SCFM)	
			@45 PSI	@100 PSI
M5	79012	81012	3	7
G 1/8	85022	87022	10	25
G 1/8	76022-71-21	76023-71-41	17	32
G 1/4	N/A (75 SERIES)	76043-81-41	22	39

OPERATION  
SETUP FOR  
3-WAY VALVE



OPERATION  
SETUP FOR  
4-WAY VALVE



NOTE: THIS PRODUCT IS DESIGNED TO OPERATE ONLY THE CONTROL PORT OF A CLOSED VOLUME SPRING RETURN VALVE 3-WAY OR 4-WAY.

## OPERATION:

MOMENTARILY DEPRESSING AND RELEASING THE START BUTTON INITIATES (TURNS "ON") OUTPUT AND STARTS TIMER SIMULTANEOUSLY. WHEN SET TIME IS REACHED THE OUTPUT TURNS "OFF" AND THE TIMER RESETS COMPLETING THE SEQUENCE.

THE SEQUENCE CAN BE INTERRUPTED AT ANY TIME DURING OPERATION (IF DEEMED NECESSARY) BY DEPRESSING AND RELEASING THE RESET/STOP BUTTON.

## ENVIRONMENT:

NOT SUITABLE FOR EXTERNAL OR HARSH ENVIRONMENTS. PROTECT FROM CORROSION, MOISTURE AND DIRTY ENVIRONMENTS. GENERAL ADVISE IS TO HOUSE WITHIN A PROPERLY VENTED ENCLOSURE WITH SUITABLE PROTECTION.

## EXHAUST:

AIR WILL EXHAUST FROM THIS MODULE AS PART OF THE OPERATING SEQUENCE. THE EXHAUSTED AIR CAN BUILD UP PRESSURE IN AN ENCLOSURE WHICH MAY EFFECT OPERATION. CONSEQUENTLY, THE ENCLOSURE SHOULD BE PROPERLY VENTED.

## TECHNICAL SPECIFICATIONS FOR 5ISCM MODULE:

OPERATING PRESSURE RANGE	40 TO 90 PSI
TEMPERATURE RANGE	32° TO 122°F (0° TO 50°C)
SUPPLY AIR QUALITY	CLEAN, DRY, OIL FREE AIR TO INSTRUMENT QUALITY STANDARDS. 5 MICRON FILTERED, DRY NON-LUBRICATED AIR OR NON-AGGRESSIVE GAS.
TIME SETTING	VIA ROTARY KNOB. NOTE: SET TIME DELAY ONLY ONLY WHEN SEQUENCE IS NON-OPERATIONAL "OFF".
TIMER SETTING ACCURACY	30 SEC. (+/- 0.6s) 120 SEC. (+/- 3.0s) 300 SEC. (+/- 6.0s)
TIMER REPEAT ACCURACY	30 SEC. (+/- 0.3s) 120 SEC. (+/- 1.2s) 300 SEC. (+/- 3.0s)

NOTE: THE USER MUST SUPPLY AN ON/OFF VALVE AT THE SUPPLY TO THIS PRODUCT. OTHERWISE AIR PRESSURE WILL BE PRESENT AT THE START & RESET STOP VALVES.

## DISCLAIMER:

ELLIS KUHNKE CONTROLS ACCEPTS NO RESPONSIBILITY FOR THE APPLICATION OF THIS PRODUCT. IT IS UP TO THE PURCHASER/SPECIFIER/END USER TO COME UP WITH AN ACCEPTABLE DESIGN.

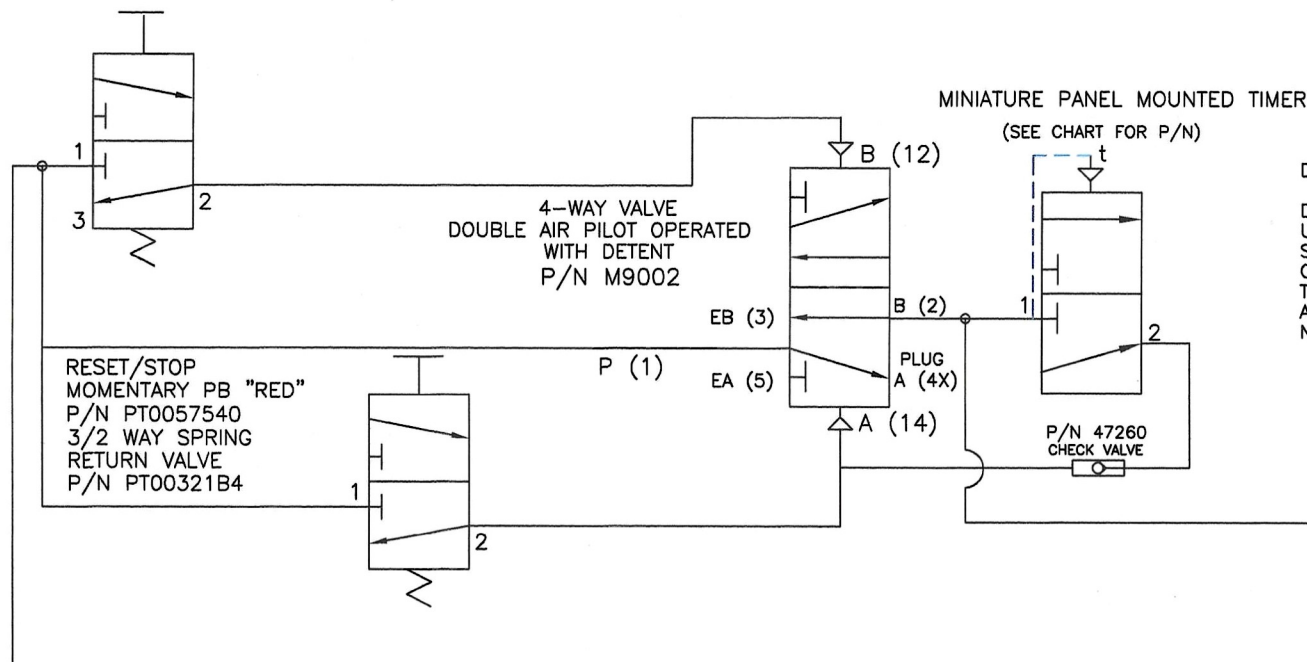
		ELLIS/KUHNKE CONTROLS		
APPROVALS	DATE	OPERATING INSTRUCTIONS FOR 5ISCM SINGLE TIMING MODULE		
DRAWN EJL	7/11/23			
CHECKED				
ISSUED				
		SIZE C	FSCM NO.	DWG. NO.
		SIMINI SINGLE CYCLE INSTRUCTIONS-2		
		SHEET 2 OF 2		

ELLIS/KUHNKE CONTROLS

OPERATING INSTRUCTIONS FOR  
5ISCM SINGLE CYCLE TIMING MODULE



PUSH BUTTON MONOSTABLE P/N PT0057500  
 COLORED DISC "GREEN" P/N PT0057001  
 3/2 WAY SPRING RETURN VALVE P/N PT00321B4



TIME RANGE SELECTION CHART

PART NO.	TIME RANGE
51020-03	2 TO 30 SECONDS
51020-34	8 TO 120 SECONDS
51020-30	20 TO 300 SECONDS

DISCLAIMER:

ANY AND ALL CIRCUIT DIAGRAMS ARE SUGGESTED WAYS TO DO A PARTICULAR BASIC FUNCTION. ALL COMPONENTS MUST BE USED WITHIN THEIR SPECIFICATIONS. NO BACK UP AND/OR SAFETY CIRCUIT ALTERNATIVES ARE SPECIFIED. ONLY BASIC CIRCUITS WITHOUT AN ENCLOSURE ARE PROVIDED. IT IS UP TO THE PURCHASER/SPECIFIER/END USER TO COME UP WITH AN ACCEPTABLE DESIGN FOR THEIR PARTICULAR APPLICATION. EKC IS NOT RESPONSIBLE FOR THE CUSTOMERS FINAL CIRCUIT DESIGN.

OPERATION:

PUSH BUTTON AND RELEASE RESULTS IN SINGLE SHOT TIMING.  
 OPTIONAL RESET/STOP IS USED TO STOP SEQUENCE

COMPONENT LIST:

QTY	PART NUMBER	DESCRIPTION
1	PT0057500	PUSH BUTTON MONOSTABLE (SPRING RETURN)
1	PT0057001	GREEN PB DISC
2	PT00321B4	3/2 WAY SPRING RETURN VALVE, NORMALLY CLOSED
1	PT0057540	MUSHROOM PUSH BUTTON MONOSTABLE (SPRING RETURN)
1	M9002	4-WAY, DOUBLE PILOT, DETENTED VALVE ASSEMBLY
1	51020-**	PNEUMATIC TIMER SELECT TIME RANGE FROM CHART
1	9042	OUTPUT MANIFOLD ASSEMBLY
1	9038	SUPPLY MANIFOLD ASSEMBLY
1	47260	CHECK VALVE

ELLIS/KUHNKE CONTROLS

DRAWN BY	EJL	02/14/23	MINIATURE PANELMOUNT TIMER	
CHECKED			ONE SHOT TIMING MODULE	
ISSUED			SIZE	FSCM NO.
			B	DWG. NO.
				51SCM-SCHEMATIC
				SHEET