

Optical Beam Shutter Line

Solenoid Technology

Shutter D23 DS20053

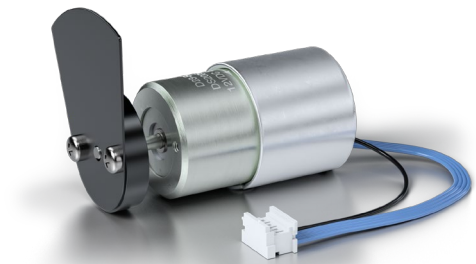
High Performance Optical Shutter D2

Based on our rotary solenoids D2, Kendrion offers a wide range of highly reliable optical shutters that are designed to block light and laser beams for safety purpose.

The D23 optical shutter represents the technical basis with remarkable properties and can be used in a wide range of applications, such as medical instruments, aeronautical instruments, fiber optic signal transmission systems and mass photometry.

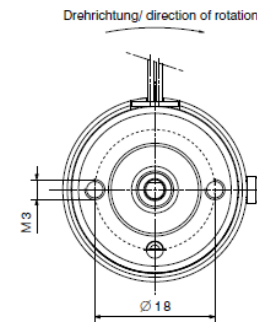
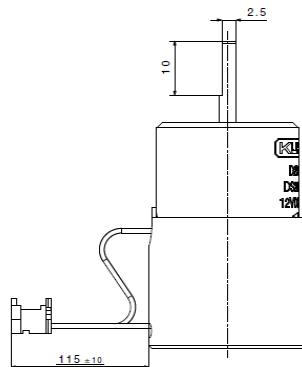
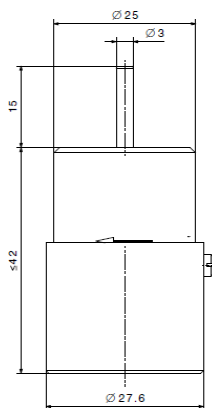
The D23 optical shutter convinces with an utmost reliability, durability and a fast switching time of approx. 30 ms. With at least 10 million switching cycles, it is designed for reliable continuous operation.

In addition, the integrated photocells enable us to detect the switching position. The bouncing effect is optimized by using an integrated damping mechanism.



Characteristics

- High lifetime
- Fast closing time
- Photocell end position detection
- Closing of the aperture in case of power failure possible
- Low emission materials
- Flexibility for customization



Maße gelten, wenn Spule nicht bestromt./
Dimensions apply when coil is not energised.

Technical data	Optical Shutter D23 / self-restoring
Power supply	24 V DC (other voltages on request)
Duty cycle	100% duty cycle
Diameter magnet	27.6mm
Rotary angle	30° (other angles 20°, 40°, 60° and 90° on request)
Closing time	typical value of 30 ms
Switching frequency	up to 5 Hz
Sensors	Photocell positioning
Mechanical durability	10 mio. switching cycles
Operating temperature	-5 °C... +35 °C
Blade material	Anodized aluminium in black (other on request)
Mounting	M3 threaded holes

¹We reserve the rights of modification, omission, error with respect to the products. Illustrations similar. All rights reserved by the individual copyright holders.